

Picnics and Weddings

Centennial Parklands is a beautiful setting for your picnic or wedding ceremony.

Picnics/ Wedding Ceremonies

Centennial Parklands is a beautiful and popular location for friends and family to gather and enjoy a picnic. Four areas within Centennial Park and one area at Queens Park have free electric barbecues for use and there are three children's playgrounds.

Centennial Parklands offers many idyllic settings for a wedding ceremony around its ornamental ponds, Paperbark trees and formal gardens. Many people choose to hold their ceremony in the Park, and their reception at the Centennial Parklands Restaurant (enquiries: 02 9361 6288).

Portable BBQs with legs (except during periods of total fire ban) and picnic equipment e.g. tables and chairs are permitted. The following are **NOT** permitted in the Parklands:

- Parking or driving vehicles on grassy areas
- Tents/ awnings and marquees except in designated function space
- PA systems and amplified music
- Leaving rubbish, litter and other waste material in places other than the Park's rubbish bins/ recycling stations
- Erection of banners, hoardings, signs and posters
- Collection of money, including the selling and hiring of goods and services
- Attaching anything to trees or hammering anything into the ground

A full list of Park Regulations is available on our website.

All areas within the Parklands are for the enjoyment of everyone and specific locations cannot be booked exclusively. However, to enable us to effectively manage large groups, we ask that you register your group if more than 50 people are to attend. This assists in the overall maintenance and conservation of the Parklands.

Registering a picnic

Registering your picnic with Centennial Parklands means that the location of your activity will be placed on a central register. This allows the Park Rangers to be advised of your presence in the Parklands and enables them to provide directions or assistance if required.

If another group has registered for a gathering in the same area on the same day, you will be advised and given the opportunity to choose another location if required.

Picnics of 100 or more people

Groups of 100 people or more are required to pay a non-refundable registration fee that contributes to maintaining the Parklands. This fee helps provide effective waste management and general high quality upkeep of the Parklands.

To register your picnic with the Parklands, simply complete the Picnic/Wedding Registration Form available by calling (02) 9339 6699 or e-mail info@cp.nsw.gov.au. A letter confirming your registration will be forwarded to you and you should bring this with you on the day of your event. If there is a problem with your booking, you will be advised by phone.

Registering a wedding

A specific area cannot be booked exclusively for your wedding but registering your wedding with the Parklands means that the location of your activity will be placed on a central register. This enables the Park Rangers to be advised of your presence in the Parklands and enables them to provide directions or assistance if required.

Advice will be provided with regard to large events in the Park which may coincide with your wedding day.

The Rose Gardens, Busby's Promontory and Column Gardens are Centennial Park's formal garden areas and are ideal for weddings. If you choose to hold your ceremony in one of these areas, a small sign will be set up on the day informing park users that a wedding will be taking place. This does not denote exclusivity of the area but does alert other Park users that an event is taking place.

There is a small non-refundable registration fee to conduct your wedding ceremony and photographs in the Parklands so please refer to the rate card for details.

To register your wedding with the Parklands simply complete the Picnic/Wedding Registration Form available by calling (02) 9339 6699 or e-mail info@cp.nsw.gov.au. A letter confirming your registration will be forwarded to you and you should bring this with you on the day of your event. If there

is a problem with your booking, you will be advised by phone.

Centennial Square

Centennial Square is the only designated function space in the Parklands suitable for events incorporating a marquee. In a lakeside setting within Centennial Park, this dedicated marquee site is serviced with power, water, lighting and parking. It makes an ideal venue for wedding receptions and corporate events. Information on Centennial Square is available on the website at www.cp.nsw.gov.au or by phoning (02) 9339 6699.

Centennial Parklands Restaurant

An alternative venue available for weddings, corporate or private functions the Centennial Parklands Restaurant located in the centre of Centennial Park, is perfect any evening of the week and in any season. Information on Centennial Parklands Restaurant is available on the Landmark Catering website at www.landmarkcatering.com.au or by phoning (02) 9361 6288.

Car Free Day

Centennial Park offers a Car Free Day on the last Sunday of every season. There is no vehicular access into the Park on these days. Accessible parking for mobility impaired visitors is available via Musgrave Gates, to Musgrave Avenue only.

Park Opening Times

Centennial Park is open sunrise to sunset. All vehicles must vacate the Park prior to sunset or be subject to a gate opening fee.

For more information, please visit the Centennial Parklands website at www.cp.nsw.gov.au or e-mail info@cp.nsw.gov.au or phone (02) 9339 6699.

picnic / wedding / activity application form

Payment will be required prior to the activity taking place and your activity will incur a non-refundable refundable registration fee.

Please read Centennial Parklands Regulations (short form) attached prior to making an application.

Return bookings to: Centennial Parklands, Locked Bag 15, PADDINGTON NSW 2021 or Fax: (02) 9332 2148

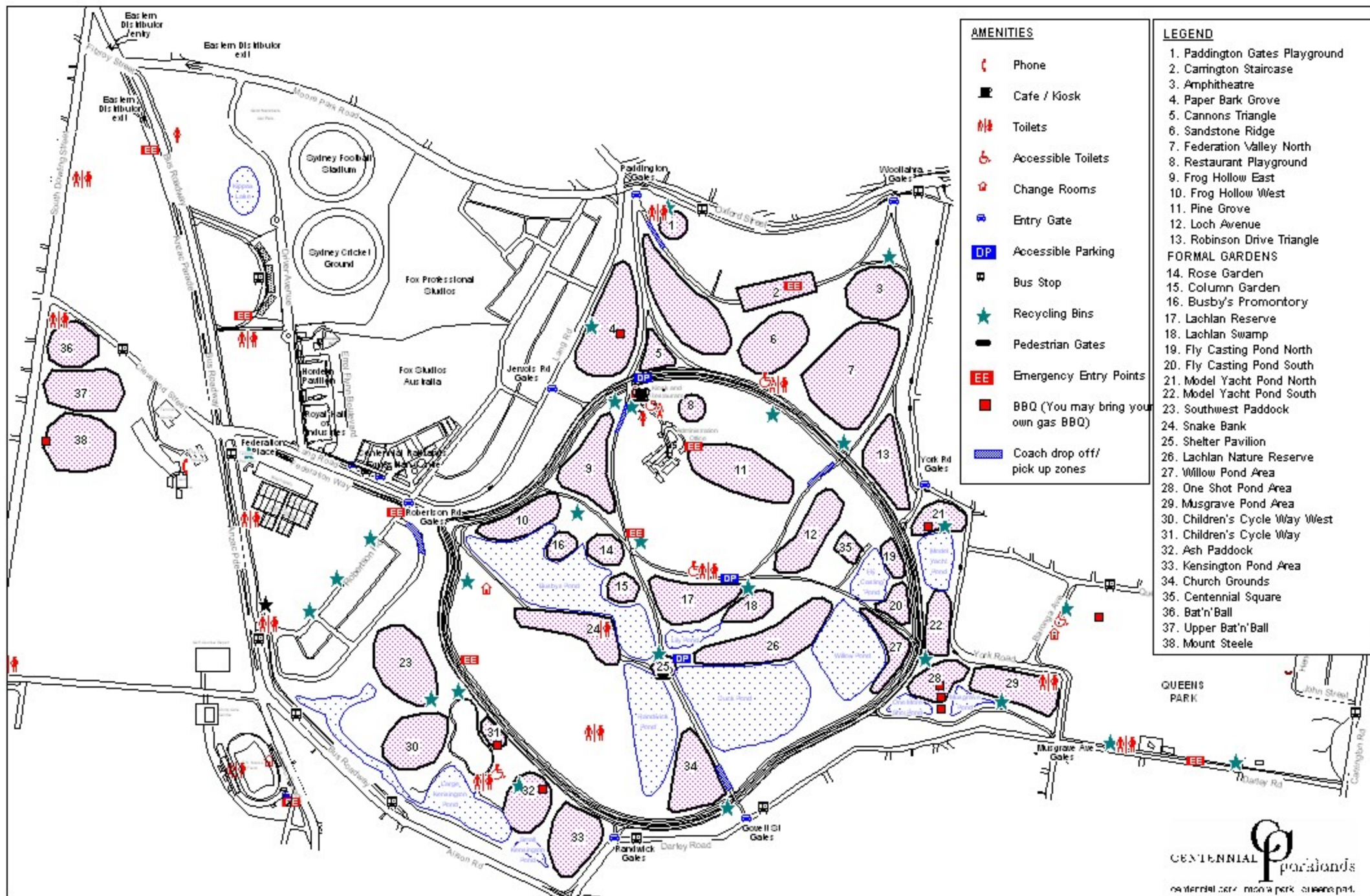
Hirer's details:			
organisation / name of booking:			
contact:			
address:	suburb/town/city	state	postcode
telephone (home):		telephone (work):	
fax:		email:	

Event details:			
type of event:		date required:	
no. of people:		location:	
time (arrival):		time (departure):	
activities to be undertaken:		
equipment: (see regulations attached)		
number of extra bins required: (fee applies)			
name of caterer: (if applicable)			
telephone:		fax:	

I hereby certify that I have read the Centennial Parklands Regulations (short form) and agree to be bound by them.

signature of applicant:		date:	/ /
-------------------------	--	-------	-----

Centennial Parklands Picnic, Wedding and Recreation Areas



AMENITIES

- Phone
- Cafe / Kiosk
- Toilets
- Accessible Toilets
- Change Rooms
- Entry Gate
- Accessible Parking
- Bus Stop
- Recycling Bins
- Pedestrian Gates
- Emergency Entry Points
- BBQ (You may bring your own gas BBQ)
- Coach drop off/pick up zones

LEGEND

1. Paddington Gates Playground
2. Carrington Staircase
3. Amphitheatre
4. Paper Bark Grove
5. Cannons Triangle
6. Sandstone Ridge
7. Federation Valley North
8. Restaurant Playground
9. Frog Hollow East
10. Frog Hollow West
11. Pine Grove
12. Loch Avenue
13. Robinson Drive Triangle
- FORMAL GARDENS**
14. Rose Garden
15. Column Garden
16. Busby's Promontory
17. Lachlan Swamp
18. Lachlan Swamp
19. Fly Casting Pond North
20. Fly Casting Pond South
21. Model Yacht Pond North
22. Model Yacht Pond South
23. Southwest Paddock
24. Snake Bank
25. Shelter Pavilion
26. Lachlan Nature Reserve
27. Willow Pond Area
28. One Shot Pond Area
29. Musgrave Pond Area
30. Children's Cycle Way West
31. Children's Cycle Way
32. Ash Paddock
33. Kensington Pond Area
34. Church Grounds
35. Centennial Square
36. Bat'n'Ball
37. Upper Bat'n'Ball
38. Mount Steele

Centennial Parklands regulations (short form)

Permitted

- Volleyball nets
- Kites
- Portable BBQs with legs (except during periods of total fire ban)
- Picnic equipment (eg: tables, chairs, etc)
- Organised games (eg: cricket, football etc in certain areas only)

Not permitted (being contrary to Centennial Parklands Regulations):

- Vehicles larger than three tonnes and over 3.5m in height
- Parking or driving vehicles on sports fields or other grassy areas, footpaths, cycle tracks or horse tracks
- Tents/awnings and marquees except in designated function space
- PA systems and amplified music
- Leaving rubbish, litter and other waste material in places other than in Centennial Parklands rubbish bins/recycling stations
- Exclusive use of Centennial Parklands is not granted and no areas of Centennial Parklands can be closed or fenced off to the exclusion of the general public
- All roads must remain open to traffic
- Erection of banners, hoardings, signs and posters
- Display or distribution of advertising material
- Picking or removal of flowers, plants and trees or part thereof
- Damage to grass, trees and other vegetation or wildlife
- Damage to buildings, structures and equipment
- Collection of money, including the selling and hiring of goods and services
- Archery, golfing, javelin, discus, abseiling, boomerangs etc
- Merry-go-rounds, blow-up castles, scaffolding and stands
- Racing (eg: bicycle races)
- Operation of motorised model aircraft, boats and cars
- Swimming, wading and fishing in ponds and streams
- Lighting of fires and the discharge of fireworks, no portable BBQs that sit on the grass, no dumping of hot coals
- Use of insulting, threatening or indecent language
- Offensive or indecent behaviour
- Cricket, football and other organised games in the vicinity of the Rose Garden and flower beds
- Attaching anything to trees or hammering anything into the ground
- Holding of meetings, functions, demonstrations or gatherings without the permission of the Centennial Park and Moore Park Trust.

The hours of opening for Centennial Park are Sunrise to Sunset. All vehicles must vacate the Park prior to sunset or be subject to a gate-opening fee.

For all other conditions of use pertaining to Centennial Parklands please refer to the Centennial Park & Moore Park Trust Act 1983 Regulations.